



Kasuga-Taisha Shrine

## Nara Komachi

address	41-2 Surugamachi, Nara-City (zip630-8357)
phone	0742-87-0556
e-mail	<a href="mailto:kyokot0201@hotmail.com">mailto:kyokot0201@hotmail.com</a>
URL	<a href="http://www.hostelworld.com/availability.php/Guesthouse-Nara-Komachi/Nara/40721">http://www.hostelworld.com/availability.php/Guesthouse-Nara-Komachi/Nara/40721</a>
how to get to	4-minute walk from Central Exit of JR Nara sta., or 15-minute walk from No.6 exit of Kintetsu Nara sta.



Omizutori at Todaiji Temple.

In the midst of the downtown of Nara-City, you can find a newly built fantastic guesthouse "Nara Komachi." Well, Komachi is a symbol of a beautiful woman, and by further extension, means a good thing or person as well. The name is derived from the Venus poet, Ono no Komachi(825-900), who composed the following well-known elegiac Waka, a kind of poem:

はなのいろは	Color of the flower
うつりにけりな	Has already passed away
いたづらに	While on trivial things
わがみよにふる	Vainly I have set my gaze,
ながめせしみに	In my journey through the world.

Do you know the fact about 50% of Japan's national treasure Buddhist statues and 30% of national treasure buildings are concentrated in Nara?

Enjoy Nara by lodging in Nara Komachi when you're young and well. Its easy access from JR-/Kintetsu- Nara Station and lots of tourist attractions, the plentiful facilities in it, the owner's friendship with you, and reasonable prices will enchant you.

The lady owner, Kyoko, from Hyogo has been crazy about Nara, which has her move from Tokyo to Nara to serve all people who are fond of Nara with her flood of friendship with them.

Her 3 chasing dream about the accommodations is as follows: full of friendship, protecting guests' privacy, and reasonable prices based on her 5 years experience as a hotel manager in Tokyo.

And she is trying to serve to introduce Kimono culture, cycling tour, and so on to her guests. She is really a Komachi!



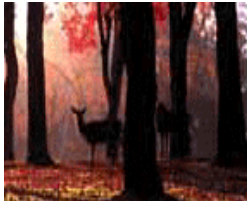
lady owner, Kyoko



appearance



a deer in Nara Park



room rates	2,500~3,800 Yen depending on 7 roomtypes
business time	8AM-10PM
check in/out	3PM-10PM / 11AM
Max. occupant	9 rooms, 22 persons
curfew	No curfew system
smoking	not allowed
booking	<a href="http://www.hostelworld.com/">http://www.hostelworld.com/</a>

Nara Tokae

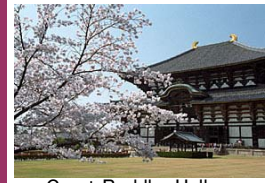




Kasuga-Taisha-shrine with stone lanterns



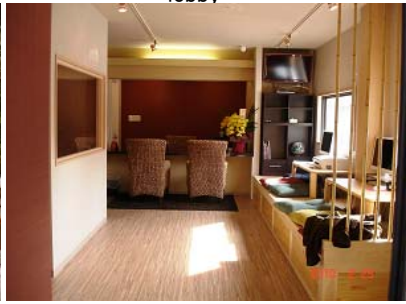
I'll show you to my guesthouse. lobby



Great Buddha Hall, Todaiji-Temple



entrance



free kitchen corner in the lobby



computer & printer you can use freely



passage way



You can make use of any room out of the 7 kinds of rooms



Uneme-Festival at Sarusawa-Ike Pond



Internet	free of charge in each room & the lobby
A/C	air conditioning in each room & the lobby
TV	32-in TV in each room & the lobby
shower,toilet	Shower booth and toilet in each room
guestkitchen	Self-catering kitchen in the lobby
fax	Fax Service
bicycle	Bicycle Hire

Ukimido in Nara Park during Toka-E festival

